

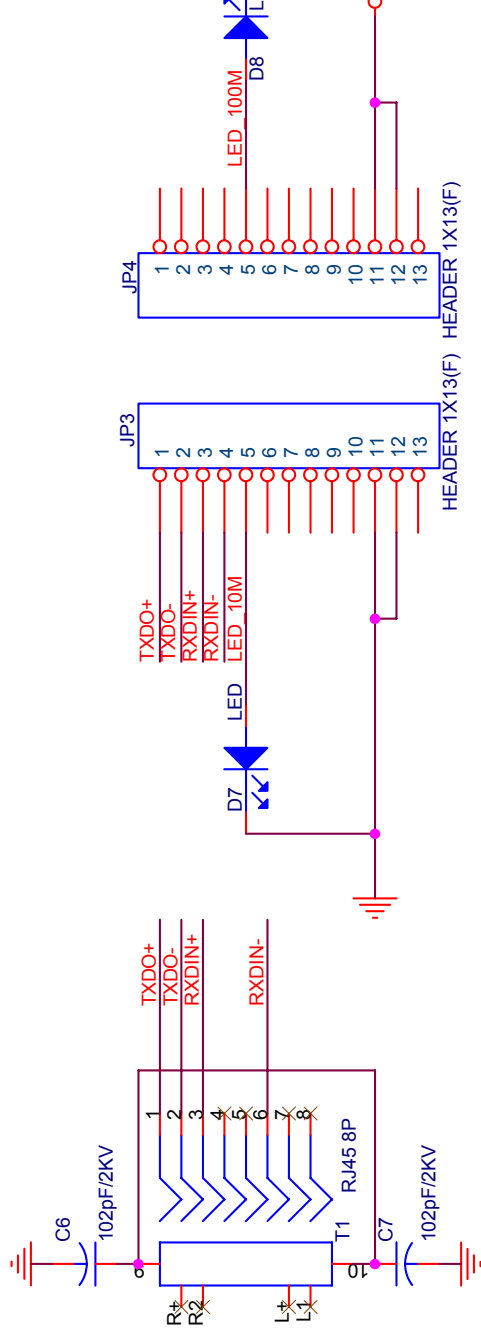
Absolute Max. Ratings		Min.	Max.	Unit
Vil	Input Low Voltage		1.08	V
Vih	Input High Voltage	2.1		V
Vol	Output Low Voltage		0.4	V
Voh	Output High Voltage	2.4		V

MOXA HWI

Title: **For NE-410**

Size: A Document Number: **DIO**

Date: Monday, May 17, 2004

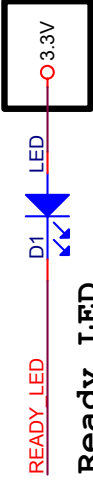
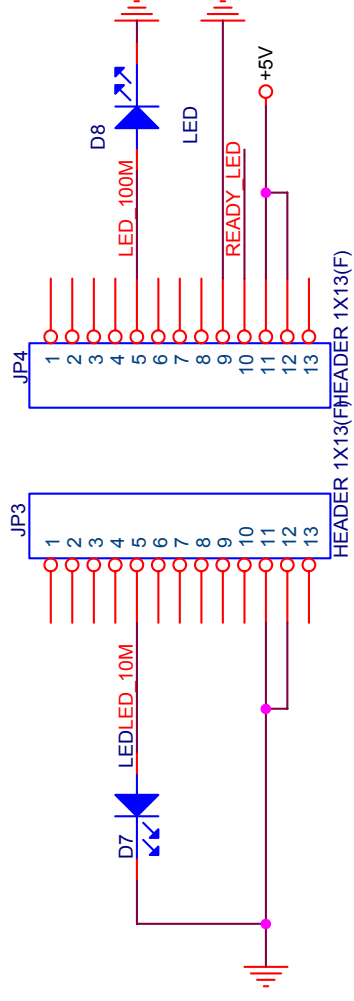


MOXA HWI

Title **For NE-4100**

Size A Document Number **EtherNet**

Date: Monday, May 17, 2004



Ready LED

Note!! If the power is connected to 5V for Ready LED. The light-emitting diode will be a little luminous while it is turn off. We recommend connecting power to 3.3V to avoid this condition.



Power LED

MOXA HWI

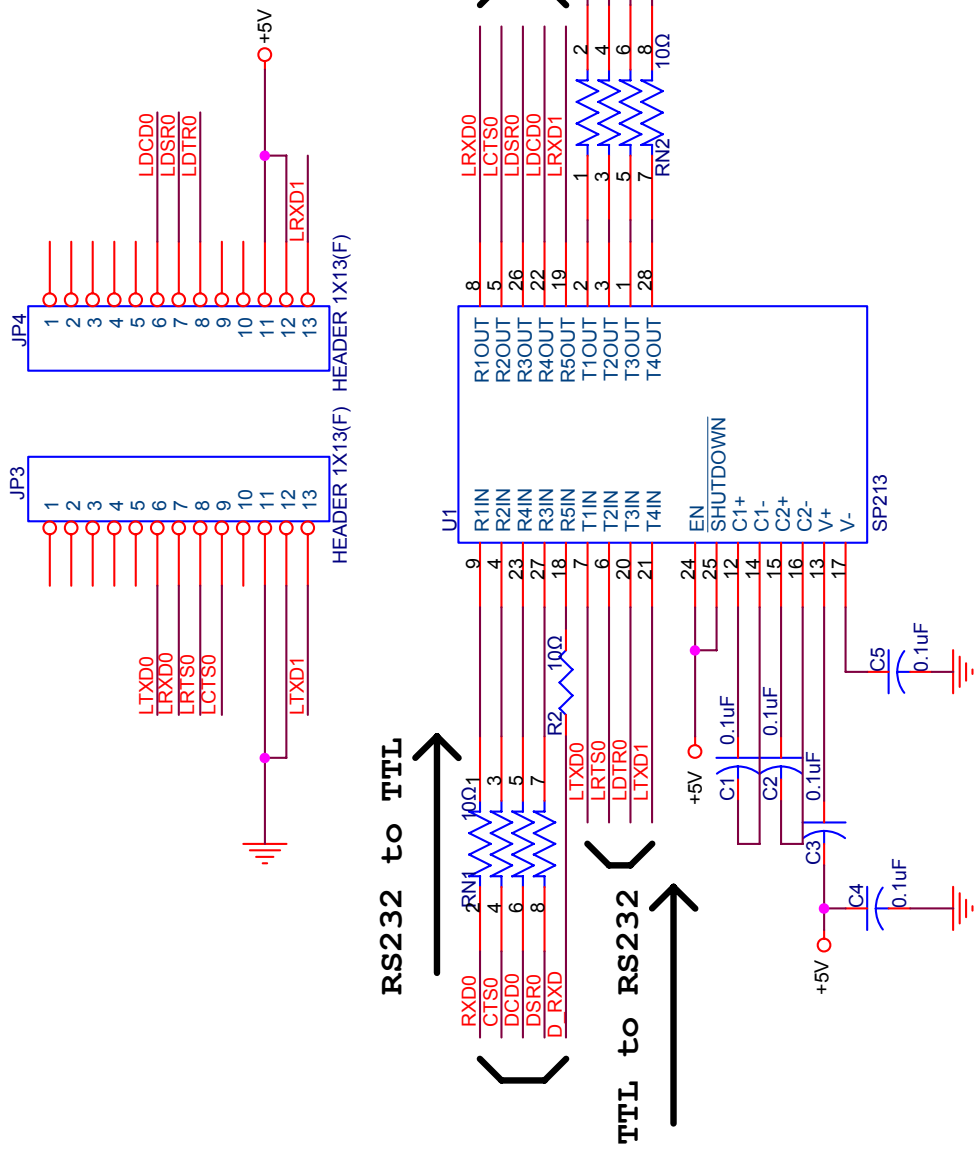
Title

For NE-4100

Size Document Number

A **LED Display**

Date: Monday, May 17, 2004



RS232 to TTL

TTL to RS232

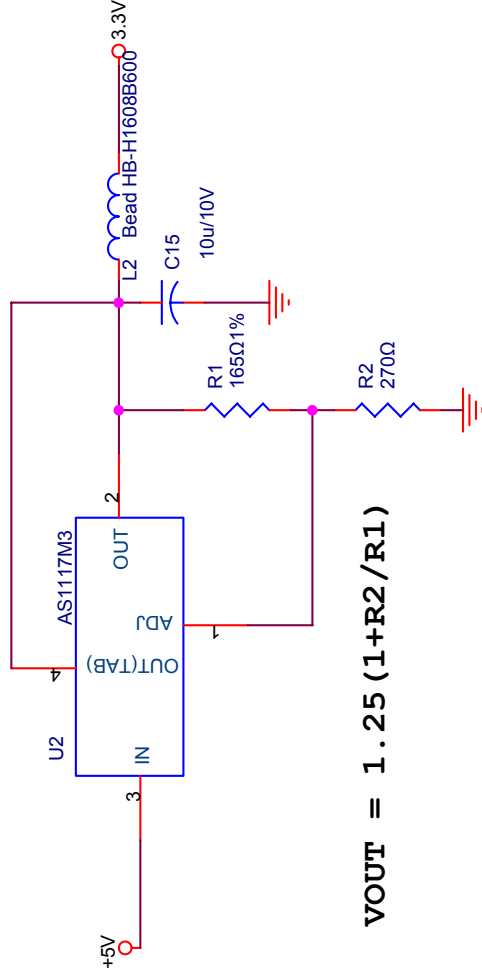
RS232 to TTL

TTL to RS232

Title

MOXA HW1
For NE-4100
 Document Number
Line Driver & Co
 Date: Monday, May 17, 2004

This linear regulator is only for Ready LED to avoid radiating little light while



MOXA HWI

Title

For NE-410

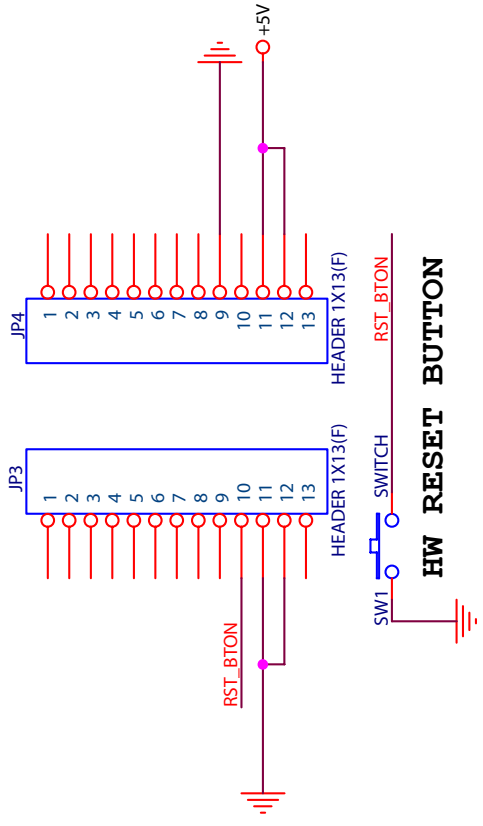
Size A Document Number

Linear Regulator

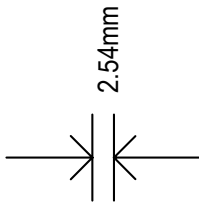
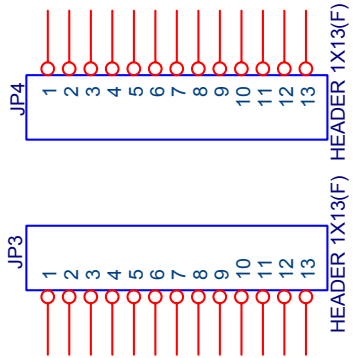
Date:

Monday, May 17, 2004

While push this button, the NE-4100T terminates all immediately and restarts the system.



MOXA HWD	
Title	For NE-4100T
Size	Document Number
A	Reset System
Date:	Monday, May 17, 2004



MOXA HWI	
Title	For NE-410
Size	Document Number
A	Pitch of Header
Date:	Monday, May 17, 2004

2

3

4

5